

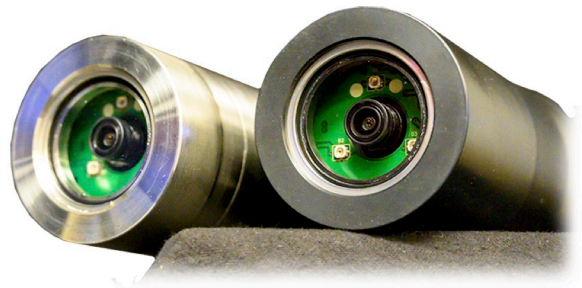


IP Camera

A budget friendly IP camera with internal health and status monitoring. Ideal for remote long term research, observation and security.

STANDARD FEATURES

- HD Camera
- Rated to 200m seawater
- Assignable IP address
- Flat port
- Powered via POE (+48vdc)
- UV anti-biofouling LEDs
- Swappable sub-surface
- MCBH8P connector
- Housing options: Stainless steel (negatively buoyant)
Acetal Copolymer (positively buoyant)
- Housing Dimensions: Stainless - 2.625"d x 6"
Acetal - 2.625"d x 6" w/flared end



HEALTH & STATUS MONITORING

- Internal temperature
- Internal humidity sensor
- Forward and rear leak detectors
- Positive and return fault sensors



OPTIONAL FEATURES

- Rated to 2000m seawater (stainless housing)
- UHD Camera
- LED Light Ring
- Project specific lensing



617.394.1188

info@marineimagingtech.com